

# DASH WEEKEND SCHEDULE

## ROUTE E Early service on Saturday only

*Leaves Trinity @ Washington	Los Angeles @ 9th	7th @ Flower (westbound)	*Wilshire @ Witmer	7th @ Flower (eastbound)	7th @ Los Angeles	Arrives Trinity @ Washington
------------------------------	-------------------	--------------------------	--------------------	--------------------------	-------------------	------------------------------

**SATURDAY 6:30 AM - 5:00 PM:** approximately every 6 minutes

**SUNDAY 10:00 AM - 5:00 PM**

:00	:07	:14	:19	:25	:30	:40
:15	:22	:29	:34	:40	:45	:55
:30	:37	:44	:49	:55	:00	:10
:45	:52	:59	:04	:10	:15	:25

\* First buses leave these points at 6:30 am on Saturday and 10:00 am on Sunday. Last buses leave these points at 5:00 pm on Saturday and Sunday.

## ROUTE F Every 20 minutes from 10:00 AM - 5:00 PM

*Leaves Beaudry betw. 3rd & 4th	*Flower @ 7th	Figueroa @ Washington	Vermont @ Exposition	Jefferson @ Hoover	Figueroa @ 7th	Arrives Beaudry betw. 3rd & 4th
---------------------------------	---------------	-----------------------	----------------------	--------------------	----------------	---------------------------------

**SATURDAY AND SUNDAY**

:00	:04	:15	:18	:22	:28	:35
:20	:24	:35	:38	:42	:48	:55
:40	:44	:55	:58	:02	:08	:15

\* First buses leave these points at 10:00 am, last buses leave these points at 5:00 pm.

## ROUTE DD Every 20 minutes from 10:00 AM - 5:00 PM

*Leaves Alameda @ College (Gold Line)	1st @ Los Angeles (Little Tokyo)	*3rd @ Alameda (Little Tokyo)	7th @ Flower (Macy's Plaza)	*7th @ Figueroa (Red/Blue Line)	Broadway @ Alpine (Chinatown)	Arrives Alameda @ College (Gold Line)
---------------------------------------	----------------------------------	-------------------------------	-----------------------------	---------------------------------	-------------------------------	---------------------------------------

**SATURDAY AND SUNDAY**

:00	:10	:17	:26	:34	:43	:52
:20	:30	:37	:46	:54	:03	:12
:40	:50	:57	:06	:14	:23	:32

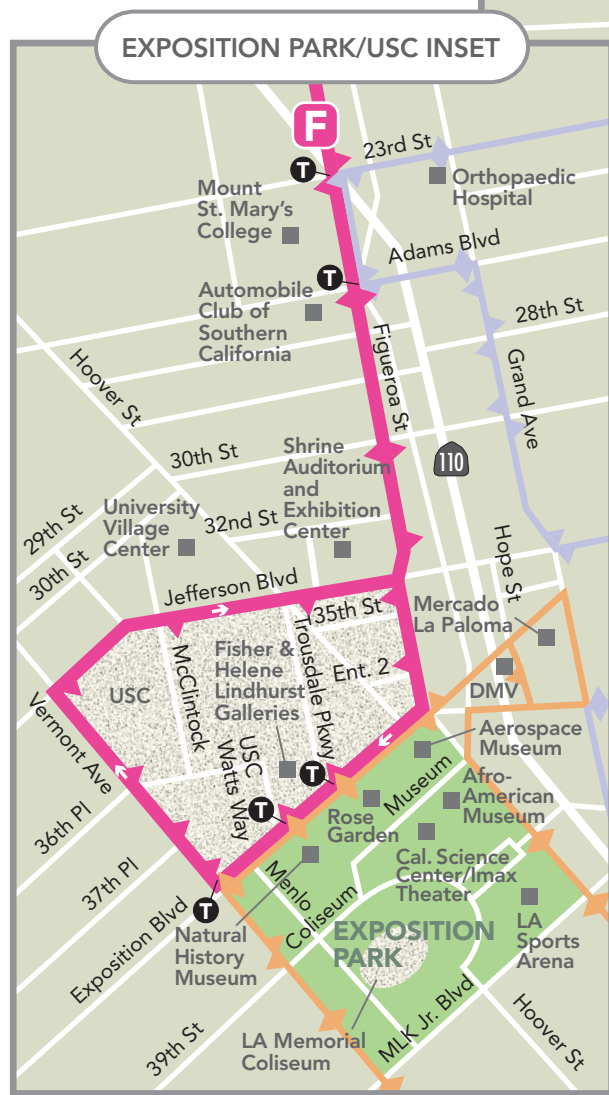
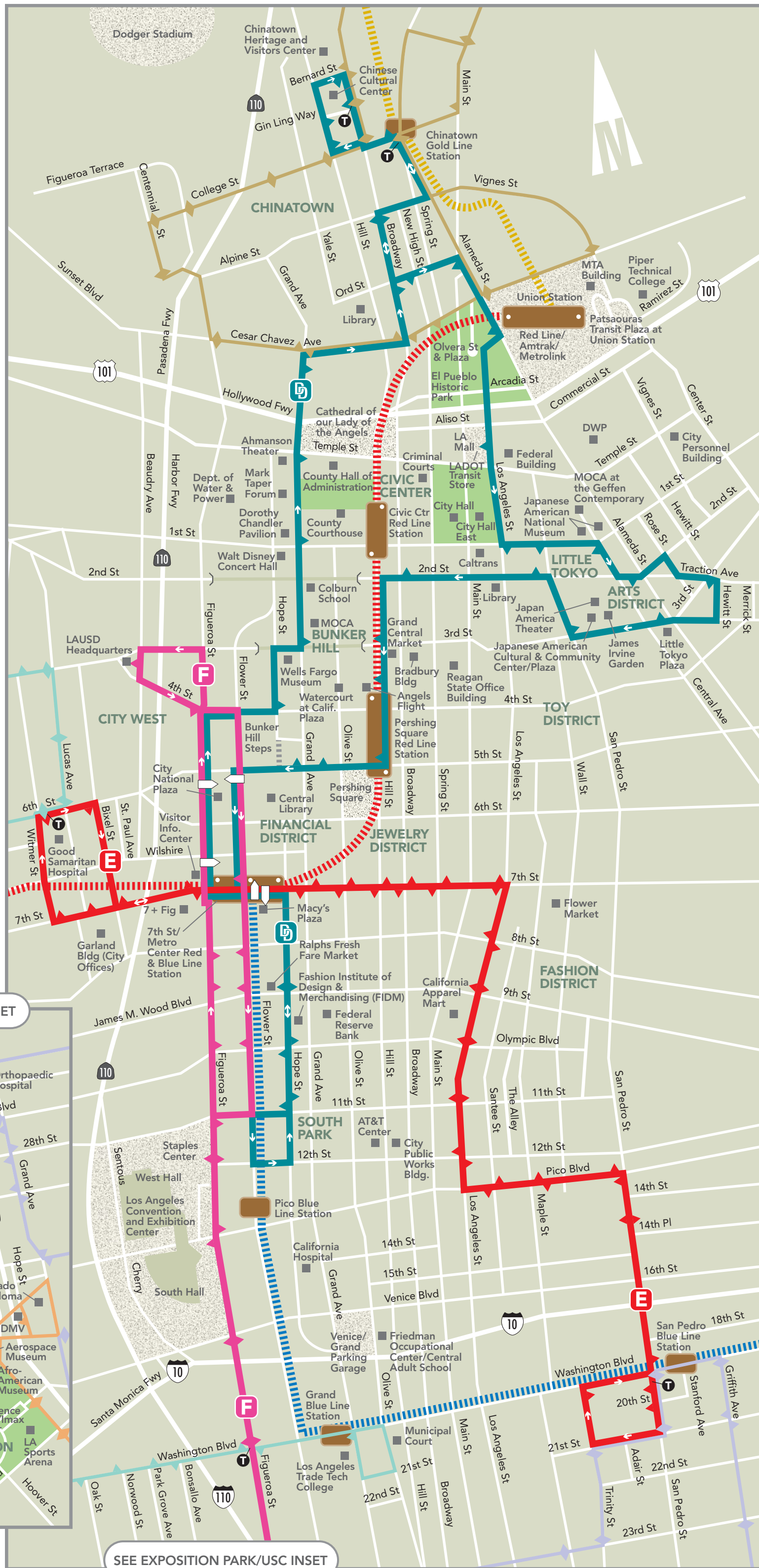
\* First buses leave these points at 10:00 am, last buses leave these points at 5:00 pm.

## DAYS OF SERVICE

DASH Downtown Los Angeles Weekend operates Saturdays and Sundays. No service on New Year's Day, Memorial Day, Independence Day, Labor Day, Thanksgiving Day, and Christmas Day.

## TRANSFERS

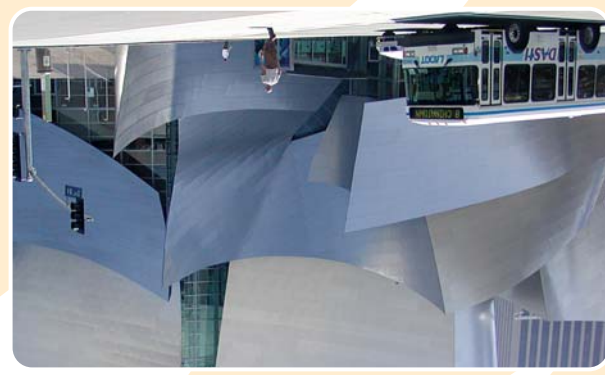
You may need to transfer between DASH Downtown Los Angeles routes to get to your destination. Just ask the driver for a free transfer when you board one DASH Downtown route, then give the transfer to the driver on the second DASH Downtown route. Transfers are valid for a limited time.



## LEGEND

- Route DD**  
Downtown Discovery  
Bunker Hill, Civic Center, Chinatown, El Pueblo Park, Little Tokyo, Financial District
- Route E**  
City West, Fashion District
- Route F**  
Financial District, Exposition Park, USC
- DASH Pico Union/Echo Park
- DASH Lincoln Heights/Chinatown
- DASH Southeast
- DASH King-East
- Metro Blue Line
- Metro Red Line
- Metro Gold Line
- Bus stop (matches route color)
- Multiple Route stop
- Point of Interest
- Transfer Point
- Metro Station and Entrances
- Tunnel

SEE EXPOSITION PARK/USC INSET



Downtown Los Angeles has so much to do and see! DASH your list. Our three weekend routes take you everywhere from Chinatown to the USC campus, from City West to the Arts District and all the sights in between.

**YOUR TICKET TO WEEKEND FUN ALL AROUND LOS ANGELES!**

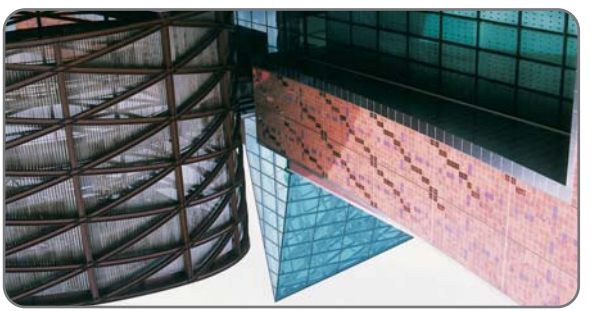
**DASH WEEKEND**

- Ahmanson Theater
- Angels Flight\*
- Angels Walk
- Bunker Hill Steps
- California Plaza and Watercourt
- Central Library
- Dorothy Chandler Pavilion
- Chinatown
- Bamboo, Chinatown and Mandarin Plazas
- Chinese Cultural Center
- Chinatown Heritage and Visitors Center
- City Hall
- Convention Center
- El Pueblo Historic Park
- Geffen Contemporary at MOCA
- Grand Central Market
- James Irvine Garden
- Japanese American National Museum
- Japan American Theater
- Japanese American Cultural & Community Center
- Little Tokyo
- Macy's Plaza
- Mark Taper Forum
- Museum of Contemporary Art (MOCA)
- Olvera Street
- Ralphs Fresh Fare Market
- 7 + Fig
- 7th St./Metro Center Red & Blue Line Station
- Staples Center
- Toy District
- Union Station
- Walt Disney Concert Hall
- Wells Fargo Museum

\*closed for repairs

**Downtown Discovery Route**

**THE ULTIMATE TOUR**



- The Alley
- Broadway Shopping District
- City West
- Cooper Building
- Fashion District
- Good Samaritan Hospital
- Jewelry District
- Macy's Plaza
- 7 + Fig
- 7th St./Metro Center Red & Blue Line Station
- San Pedro Blue Line Station

**Route E**

**SHOPPER'S PARADISE**

Clockwise from left: Chinatown, Grand Central Market, California Science Center



- Aerospace Museum
- Bunker Hill Steps
- California Museum of Science & Industry
- Exposition Park
- Fisher Gallery
- IMAX Theater
- Central Library
- Helen Lindhurst Gallery
- Los Angeles Memorial Coliseum
- Los Angeles Sports Arena
- Macy's Plaza
- Natural History Museum
- Ralphs Fresh Fare Market
- Rose Garden
- 7 + Fig
- 7th St./Metro Red & Blue Line Station
- Shrine Auditorium & Exhibition Center
- Staples Center
- University of Southern California

**Route F**

**EXPO DIRECT**

EFFECTIVE SEPTEMBER 2, 2008

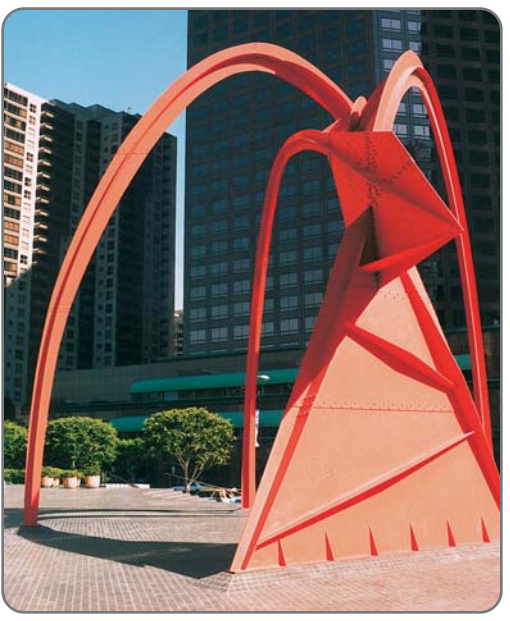
**PUBLIC ART ON DISPLAY**

Downtown Los Angeles has an amazing array of public art incorporated into plazas, parks, the transportation system, and such wonderful places as the Central Library, Maguire Gardens, Pershing Square, Biddy Mason Park in the historic core and the Zanja Madre on Figueroa below 8th St.

Be alert for surprises! Los Angeles has helped make Downtown an adventure in discovery. For more complete walking tours of public art, ask at Central Library information.



Clockwise from above: Mind, Body and Spirit, by Gidon Graetz; The Three Graces, by Julie MacDonald; Four Arches, by Alexander Calder



**FARES**

- One-Way/Cash or DASH Ticket.....25¢
  - Persons 65 years of age or older,\* persons with disabilities\* and Medicare card holders\*\* .....10¢
  - \*with government agency issued proof of age or disability and photo ID; \*\*with photo ID
  - LADOT or DASH Monthly Pass Holder .....Free
  - EZ transit pass holders .....Free
  - With Metrolink Ticket/Pass.....Free (valid one-way, round trip, or 10 trip ticket/monthly pass)
  - With Access Services Identification Card.....Free
  - Children, 4 years of age or younger.....Free (maximum of 2 when accompanied by a fare paying adult)
- DASH Monthly Passes are available for \$9. DASH Tickets are available in books of 60 for \$15. Call (213, 310, 323 or 818) 808-2273 or visit our website at [www.ladottransit.com](http://www.ladottransit.com) for information about buying tickets or monthly passes.

**INFORMATION**

- If you need further assistance, please call one of the following numbers:
- LADOT Transit Information**  
6:30 AM–7:00 PM Monday–Friday  
DASH, Commuter Express, Bunker Hill Metrolink Shuttle, Weekend Observatory Shuttle  
(213, 310, 323 or 818) 808-2273
  - Comments/Complaints .....(213, 310, 323 or 818) 808-2273
  - Lost & Found .....323-222-0010
  - Web Address.....[www.ladottransit.com](http://www.ladottransit.com)
  - Transit Routing Assistance**  
6:30 AM–8:00 PM Monday–Friday  
8:00 AM–4:00 PM Saturday & Sunday
  - All Transit Services in LA County.....1-800-COMMUTE
  - Hearing Impaired.....1-800-252-9040
  - Metro Trip Planner includes all fixed route transit services in LA County.....[www.metro.net](http://www.metro.net)

**DASH DOWNTOWN LOS ANGELES WEEKEND**



Bunker Hill Steps

