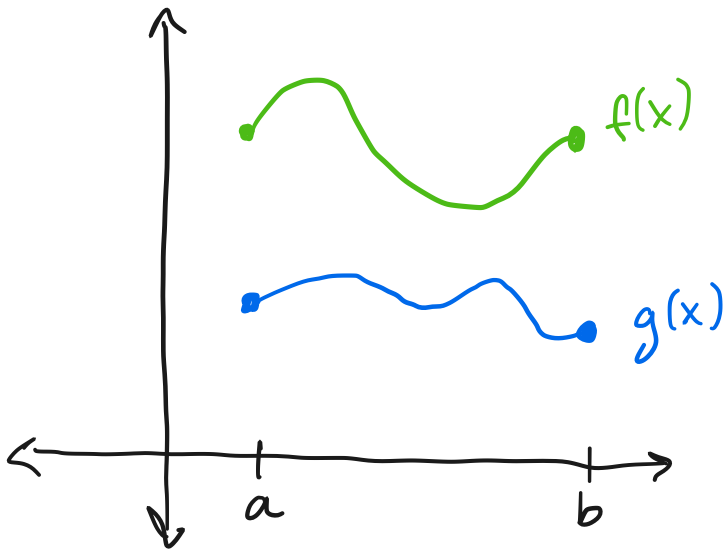


**Comparison Theorem** (*Theorem 1.2*) If  $f$  and  $g$  are integrable and  $g(x) \leq f(x)$  for  $x$  in  $[a, b]$ , then



If there are numbers  $m$  and  $M$  so that  $m \leq f(x) \leq M$  for  $x$  in  $[a, b]$ , then

